

# MQC Series Multi-Directional Forklift

Long material handling solution

Rated Capacity: 2.5t-5t



# EXPLORE THE MQC SERIES FOR YOUR BUSINESS

MQC series forklifts enable your company to achieve breakthroughs in long material storage management:

- 1. Increased warehouse space utilization, reducing storage costs.
- 2. Simplified handling processes, and minimize handling risks.
- 3. Improved operational efficiency, addressing challenges in stacking long materials.
- 4. Flexibility to navigate the vehicle in narrow aisles, with a small turning radius.

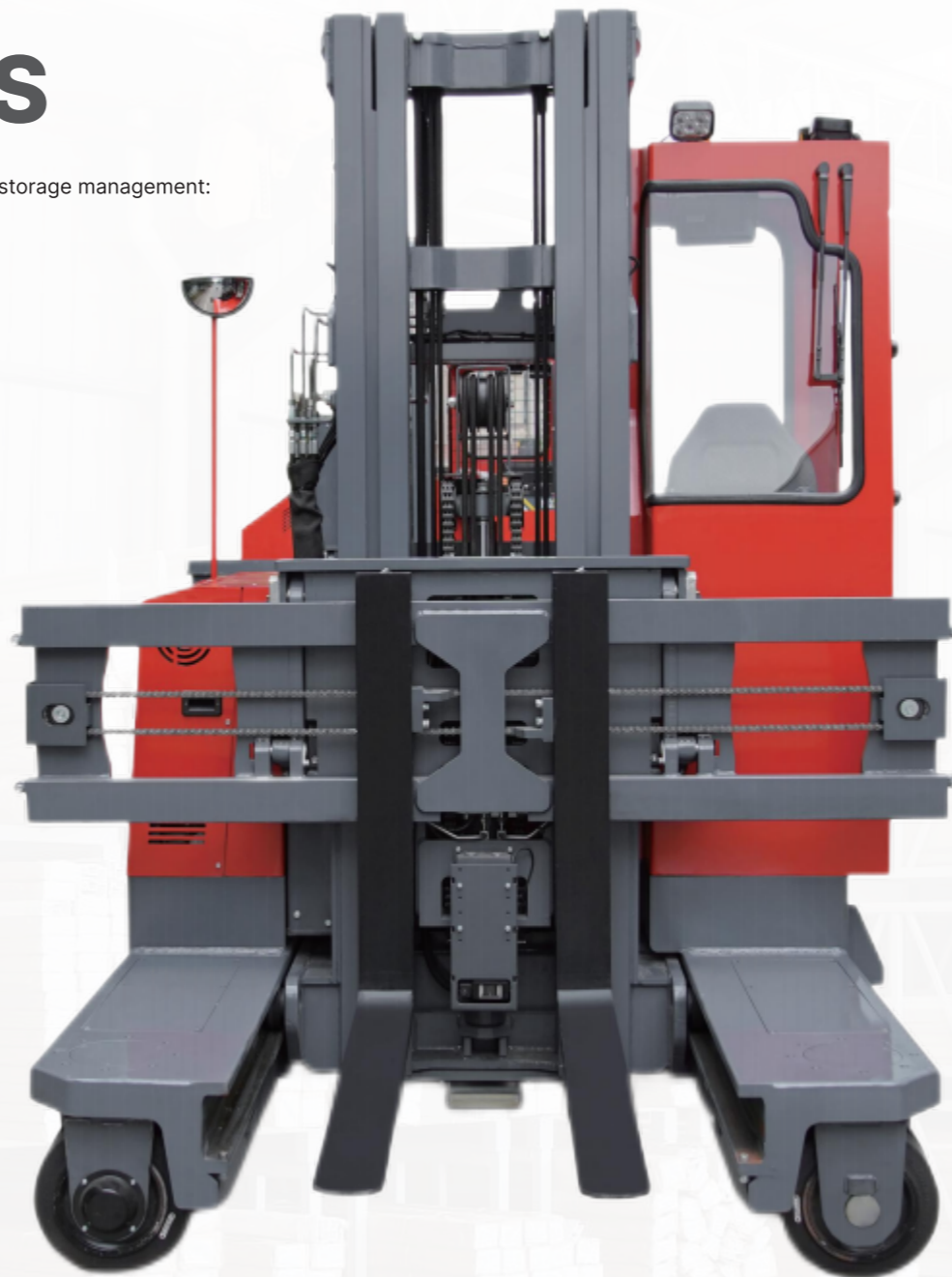
ADVANCED PERFORMANCE •



HIGH LOAD CAPACITY •



VERSATILE MANEUVERABILITY •



• EFFECTIVE SPACE UTILIZATION



• RELIABILITY & DURABILITY



• ENHANCED SAFETY



• OPERATOR COMFORT

## WHY CHOOSE MULTI-DIRECTIONAL FORKLIFT TRUCK?

Narrower stacking aisles & Higher warehouse utilization

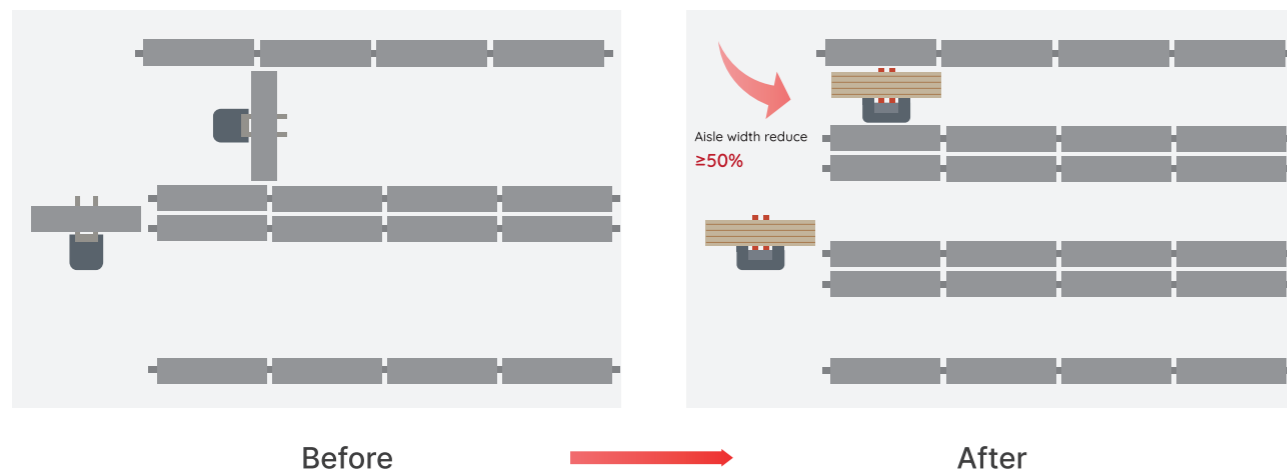
MQC Series are multi-directional reach trucks, with rated loads of 2.5 to 5.0 tons. The mast can be moved forward or retracted as a whole, and it is equipped with an extra-width fork positioner. It features independent control of four-wheel steering, enabling multiple driving modes of straight, sideways, diagonal, and in-situ rotation. When operating laterally, it requires a narrow stacking aisle, making it particularly suitable for handling and stacking long materials in narrow aisle working conditions.

## High-Precision Mast



## Very Narrow Aisle

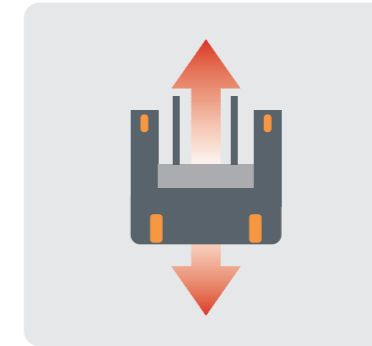
Multi-directional driving mode, the longer the material, the better the effect



## Flexible Driving Mode



Side travelling mode



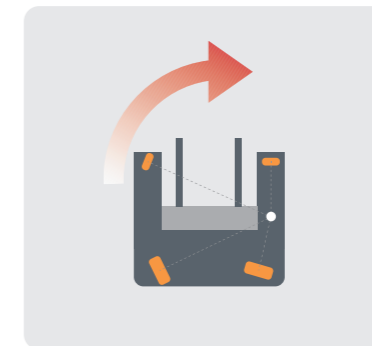
Straight travelling mode



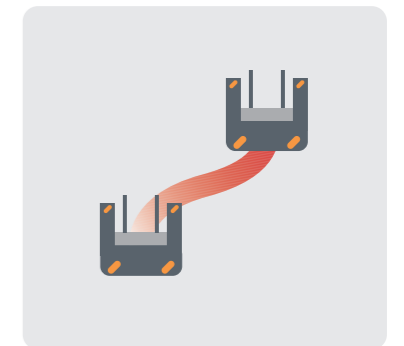
Diagonal travelling mode



360° In-situ rotation mode

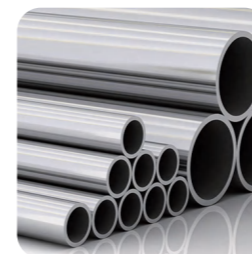


Min right angle turning



Diagonal direction adjustable

## Applicable Industries



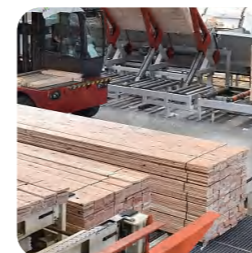
Steel pipe industry



Renewable energy industry



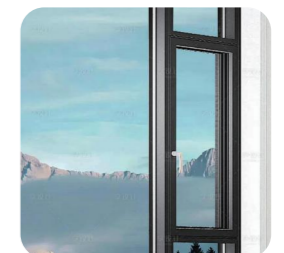
Construction industry



Sheet material handling (Timber)



Profile handling (Aluminum profiles)



Door/Window curtain wall sectors

## Performance

- High-precision mast with excellent load capacity, even at ultra-high position.
- AC maintenance-free system without a carbon brushless dual drive motor ensures high efficiency, energy saving, and powerful performance under heavy-duty conditions.



- Large-capacity lead-acid/lithium batteries provide ample power for impressive driving speeds, adaptability to various working conditions, and quick charging function.



Optional Lithium battery



**8m**  
Maximum  
lifting height

**2.5t-5t**  
Rated  
load capacity



## Reliability

- Advanced CURTIS controller from the U.S. offers stable performance, intelligent self-diagnosis, and a low failure rate, ensuring reliable operation.
- All solid rubber tires are suitable for both indoor and outdoor work, providing excellent road adaptability.



- High-definition visual protection glass: Provides clear visibility from all angles for safer and more comfortable operation.





## Safety

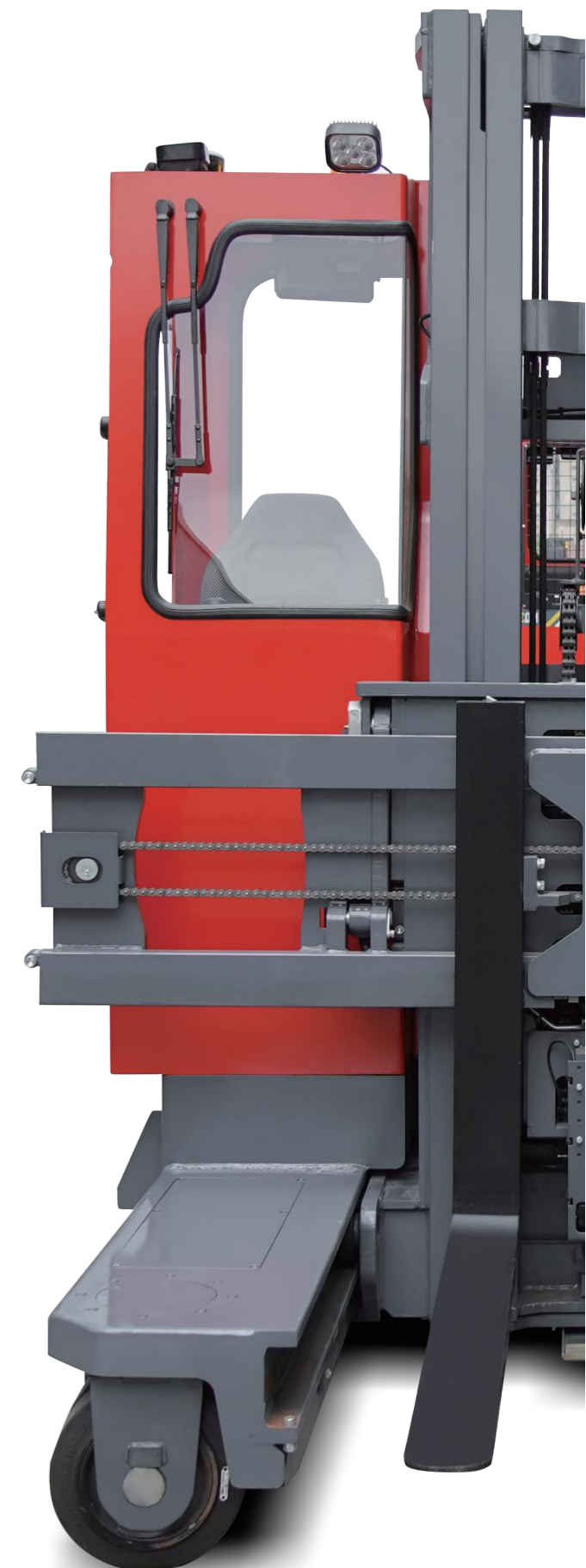
- When the operator leaves the seat or sits in an incorrect position, it makes it impossible for the OPS sensoring operator, to ensure the truck safe operation.
- Equipped with a wireless camera and high-definition video display, offering enhanced visibility for high-level stacking, improving operational safety and efficiency.



- The flashing light and blue light are designed to alert walkers or working trucks in open area or in narrow aisles to the working truck, additionally the blue light provides the operator with a visual reference.



- Double rear driver motors, Two braking Motors, Four Steering Wheel Motors, which make really high-performance of the truck in climbing, braking, anti-skid and more powerful.



# Comfort

- The ergonomically designed cab, adjustable steering wheel, and seat offer generous maneuvering space for all-around operational comfort.

- Multi-function instrument display provides real-time data, including drive wheel status, working time, power, parking situation, and more, enabling precise control and safer operation.

- Ergonomic designed integrated handle for easy, comfortable, and convenient operation.

- Electric power steering (EPS) offers precise and fast steering response, improving operation comfort and safety, and reducing operator fatigue.

- An emergency stop switch that quickly cuts off the power supply and vehicle operation for maximum safety.



# MQC25

Multi-Directional Forklift (2.5t)



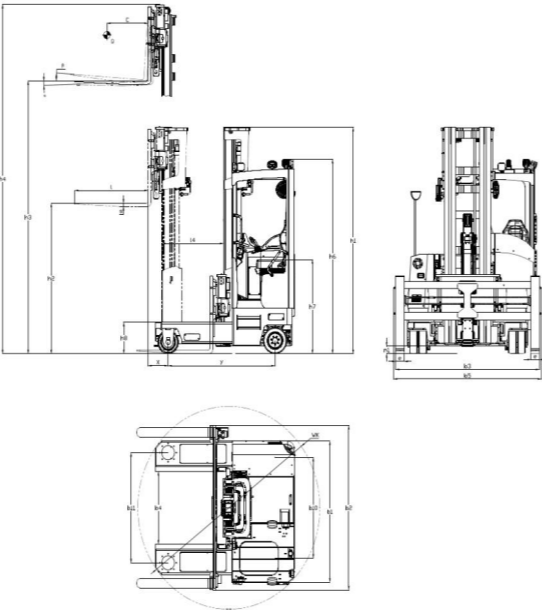
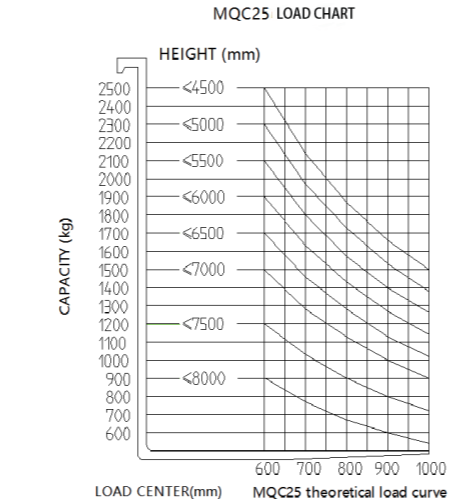
Model	MQC25
Load Capacity(kg)	2500
Load Center Distance(mm)	600
Overall Length(mm)	2300
Overall Width(mm)	1850/2160
Reach distance(mm)	900

Performance Data	
Travel Speed, laden/unladen(Km/h)	6/7
Travel Speed, laden/unladen, Sideways(Km/h)	8/9
Lift Speed, laden/unladen(mm/s)	200/300
Lowering Speed, laden/unladen(mm/s)	300/220

Dimensions	
Fork Dimensions l/e/s(mm)	1070/125/45
Spread Fork Outside(mm)	550~2100
Track width, rear(mm)	1320
Track width, front(mm)	1442

Electrical Parameters	
Drive Motor Rating(kw)	6.5AC
Lift Motor Rating(kw)	12.5AC
Battery Voltage/Rated Capacity(V/Ah)	48/500
Battery Weight(min.)(kg)	810
Steering System	Electric power
Battery Change Method	Hoisting

\*The MQC series comes standard with solid rubber tires on all drive wheels. The MQC 30/40/50 models feature polyurethane front wheels, while the MQC 25/35/45 models are equipped with rubber front tires.



# MQC30

Multi-Directional Forklift (3t)



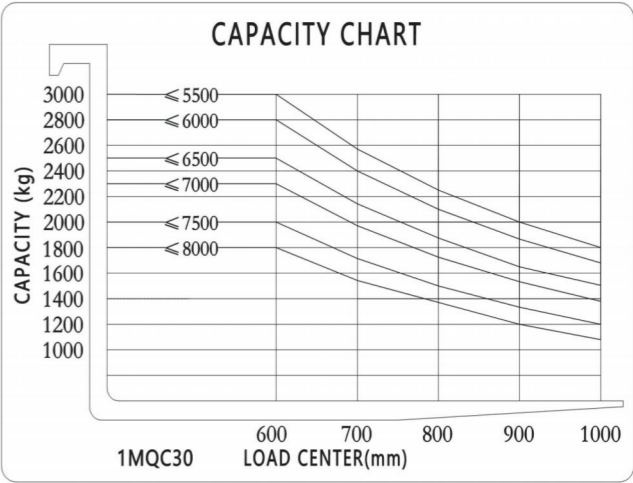
Model	MQC30
Load Capacity(kg)	3000
Load Center Distance(mm)	600
Overall Length(mm)	2300
Overall Width(mm)	1850/2160
Unladen in-situ rotation diameter(mm)	2660

Performance Data	
Travel Speed, laden/unladen(Km/h)	6/7
Travel Speed, laden/unladen, Sideways (km/h)	7/8
Lift Speed, laden/unladen(mm/s)	200/300
Lowering Speed, laden/unladen(mm/s)	300/220

Dimensions	
Fork Dimensions l/e/s(mm)	1070/125/45
Spread Fork Outside(mm)	560~2560
Track width, rear(mm)	1320
Track width, front(mm)	1442

Electrical Parameters	
Drive Motor Rating(kw)	6.5AC
Lift Motor Rating(kw)	12.5AC
Battery Voltage/Rated Capacity(V/Ah)	48/500 <sup>[4]</sup>
Battery Weight(min.)(kg)	810
Steering System	Electric power
Service/Parking Brake	Electromagnetic

\*The MQC series comes standard with solid rubber tires on all drive wheels. The MQC 30/40/50 models feature polyurethane front wheels, while the MQC 25/35/45 models are equipped with rubber front tires.



# MQC35/40

Multi-Directional Forklift (3.5-4t)



Optional Li-on battery

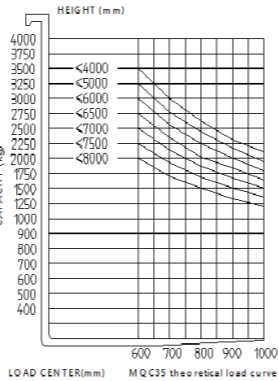
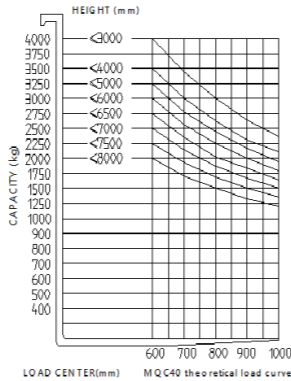
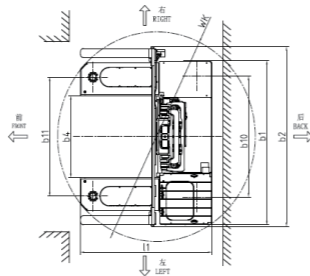
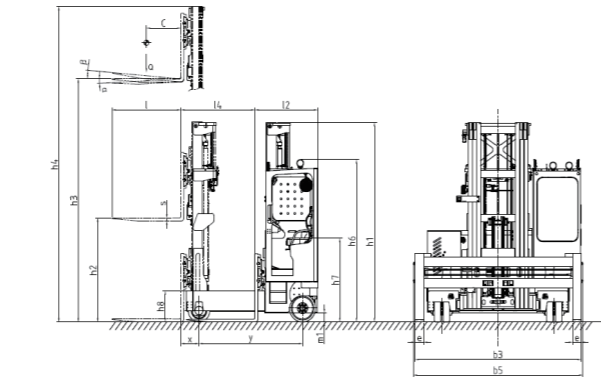
Load Capacity(kg)	3500/4000
Load Center Distance(mm)	600
Overall Length(mm)	2300
Overall Width(mm)	2183/2435
Reach distance(mm)	1300

Travel Speed, laden/unladen(Km/h)	7/8
Lift Speed, laden/unladen(mm/s)	150/250
Lowering Speed, laden/unladen(mm/s)	195/160

Fork Dimensions l/e/s(mm)	1200/150/50
Spread Fork Outside(mm)	560~2800
Track width, rear(mm)	1760
Track width, front(mm)	1712

Drive Motor Rating(kw)	8AC
Lift Motor Rating(kw)	15AC
Battery Voltage/Rated Capacity(V/Ah)	48/560
Battery Weight(min.)(kg)	910
Steering System	Electric power
Battery Change Method	Hoisting

\*The MQC series comes standard with solid rubber tires on all drive wheels. The MQC 30/40/50 models feature polyurethane front wheels, while the MQC 25/35/45 models are equipped with rubber front tires.



# MQC45/50

Multi-Directional Forklift (4.5-5t)



Optional Li-on battery

Model	MQC45&50
Load Capacity(kg)	4500/5000
Load Center Distance(mm)	600
Overall Length(mm)	2300
Overall Width(mm)	2440/2710
Reach distance(mm)	1300

Travel Speed, laden/unladen(Km/h)	7/8
Lift Speed, laden/unladen(mm/s)	210/330
Lowering Speed, laden/unladen(mm/s)	305/230

Fork Dimensions l/e/s(mm)	1200/150/50
Spread Fork Outside(mm)	560~2900
Track width, rear(mm)	2050
Track width, front(mm)	1964

Drive Motor Rating(kw)	7AC
Lift Motor Rating(kw)	25.4AC
Battery Voltage/Rated Capacity(V/Ah)	80/500
Battery Weight(min.)(kg)	1342
Steering System	Electric power
Battery Change Method	Hoisting

\*The MQC series comes standard with solid rubber tires on all drive wheels. The MQC 30/40/50 models feature polyurethane front wheels, while the MQC 25/35/45 models are equipped with rubber front tires.

